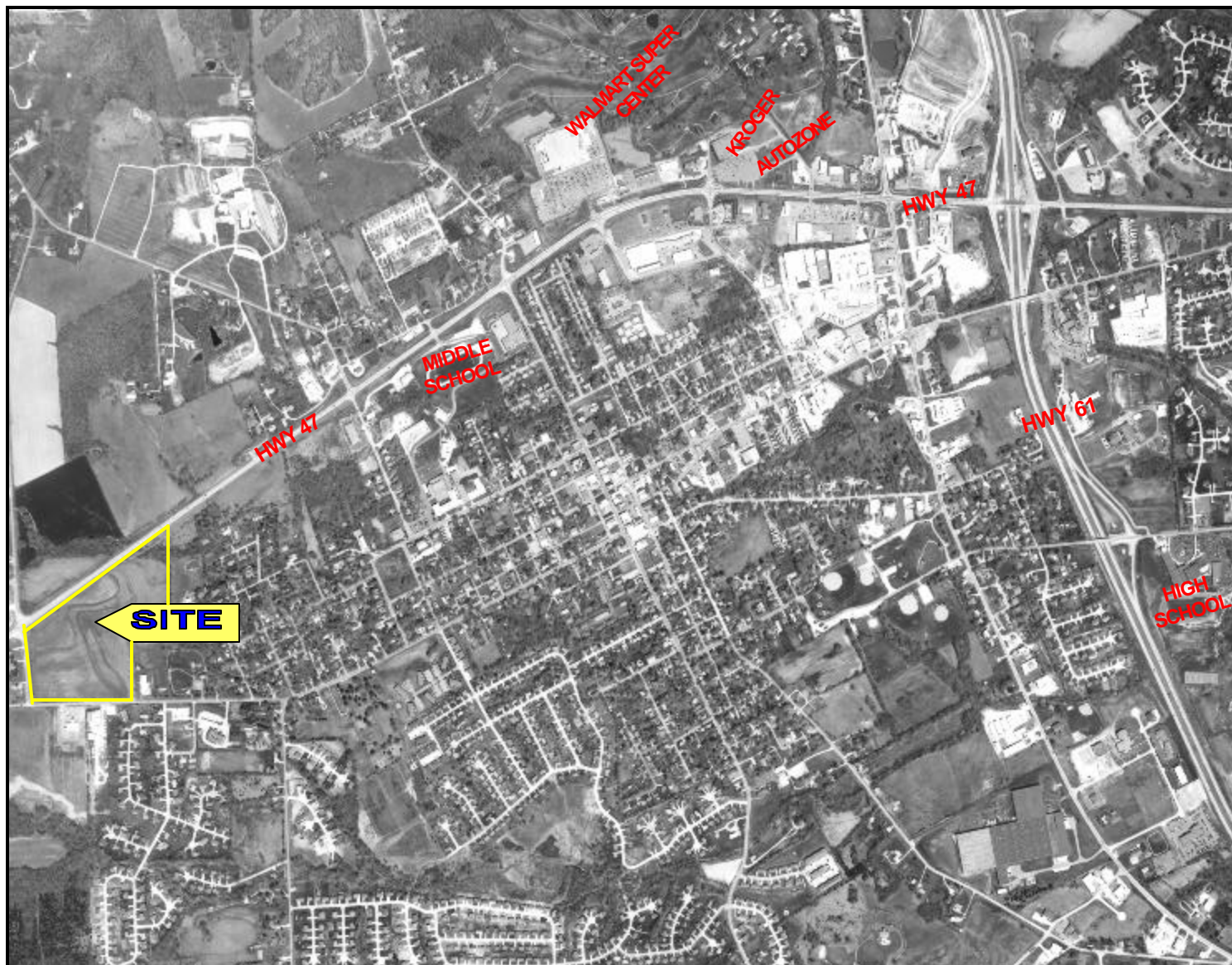


FOR LEASE or BUILD TO SUIT (May Divide) Development Opportunity

**32 +/- ACRE SITE
TROY, MO
(SUBURBAN ST. LOUIS)**



Contact: David Wright
Office: 314-652-7000 x109
Cell: 314-422-1689

KAPLAN
REAL ESTATE CO. INC.

- COMMERCIAL DEVELOPMENT SITE
- IDEAL FOR SHOPPING CENTER
- FAST GROWING COMMUNITY (LINCOLN COUNTY, MO)

Commercial • Industrial Realtors

1000 Macklind Avenue • St. Louis, Missouri 63110

Phone: 314-652-7000 • Fax: 314-652-2228 • www.kaplanrealestate.com

The above information was obtained from sources considered reliable, however, broker does not guarantee its accuracy nor warrant or represent its accuracy.